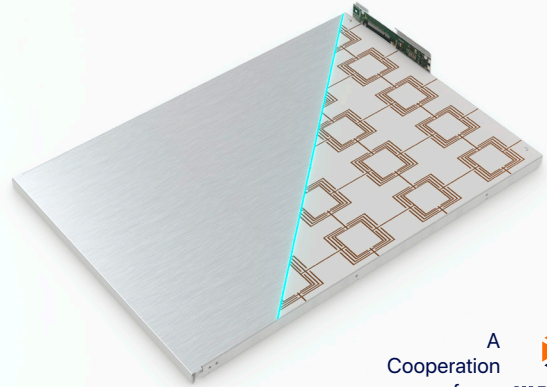


# Tailormade Functional Steel

The future of shelving.

The Tailormade Functional Steel shelves are being developed in collaboration between voestalpine and Variocube. The focus of the research is the development of a smart shelf that can determine whether and where an object is located by using a layer of conductive tracks integrated into the coating.

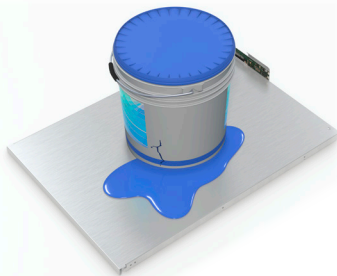
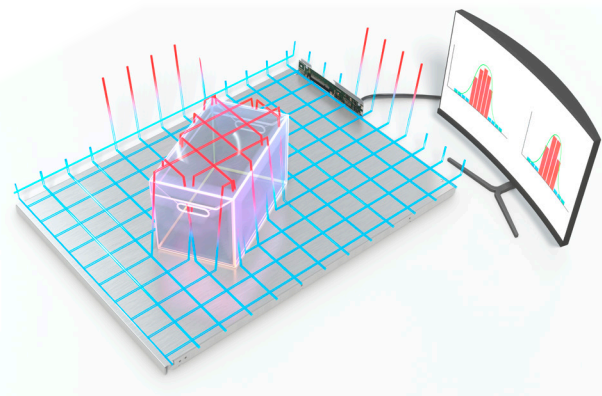
This opens up new possibilities in many areas. The occupancy detection of the compartments is no longer based on pure booking-in and booking-out data, but can accurately detect whether there are actually items in a compartment through the use of Functional Steel.



A  
Cooperation  
from: **VARIOCUBE**  
**voestalpine**  
ONE STEP AHEAD.

## What functions does Functional Steel fulfil?

- Detection of **actual load**.
- **Heating** the surface up to 100°C.
- Detection of **leaking containers**.
- **Operating element** with touch function.



## New options for lockers:



### Occupancy detection

Thanks to the integrated sensor technology, the surface recognises whether there is an object on it.



### Shelf monitoring

The sensors on the shelf can detect e.g. leaking liquids and send warning messages immediately.



### Increased process reliability

Unintentional non-insertion of goods is reduced. The user can be reminded if he mistakenly closes the compartment without contents.

## Research projects with Variocube participation.



### ÖffiPackerl

Together with Fraunhofer Austria, Wiener Linien, Österreichische Post AG, netwiss OG, Upstream Mobility, Vienna University of Technology, GRT Spedition und Logistik GmbH and Malerei Großbötzl, we are working on a new and innovative concept to make the last mile more efficient and sustainable with a network of parcel stations and parcel transport by passengers.



### PhysICAL

The lead project PhysICAL (Physical Internet through Cooperative Austrian Logistics) creates the necessary basis for a nationwide implementation of the Physical Internet in Austria - to protect the climate and for more efficient transport logistics. The 17 project partners are developing possible applications in four different sectors.



### Unlock4All

One of the project goals of Unlock4All is to design a barrier-free and inclusive parcel station with appropriate operating and parcel logic (e.g. not the top row for wheelchair users) in an accessible and easily accessible location (e.g. also urban mobility hubs).



### aiBox

Business model and service potentials for flexible flows of goods and information in the parcel segment

## Innovative solutions for our customers' challenges.

With over 20 years of expertise in B2B software development, we implement solutions to meet our customers' challenges.

In combination with your locker systems, industrial or partition wall systems or your individually manufactured furniture, we enable the logistics, goods delivery and exchange of tomorrow in companies, residential complexes, local centres and shopping centres of today.

The versatile, customisable hardware and software leaves nothing to be desired - these are smart locker systems from Variocube.



### In partnership

We deal with customers, suppliers and employees as equals.



### 20+ years of experience

As part of the Business.Group, we have over 20+ years of experience in software development.



### Solution-oriented

We find the suitable solution for your locker system requirements.

